

Sy³qua

INDIA • INDONESIA • MALAYSIA • THAILAND • USA

ENCAP® Series

ENCAP Microencapsulated Shrimp Hatchery Feed ingredients are of the highest quality and digestibility are microencapsulated within a digestible, water stable capsule to allow better assimilation and utilization. Our microencapsulation process is carried out at low temperature to maximise nutrient and vitamin availability.

[#bluebalanceassured](#)

BENEFITS

SIMPLE TO USE

Just add straight to the rearing tanks and avoid complex rehydration procedures.

WATER STABILITY

Ensures water stability through controlled buoyancy to maintain feed in the water column.

MAXIMIZE FEED INTAKE

Minimal feed wastage to maximise feed intake.

CONTROLLED BUOYANCY

To ensure high food availability in the water column.

HIGH SURVIVAL

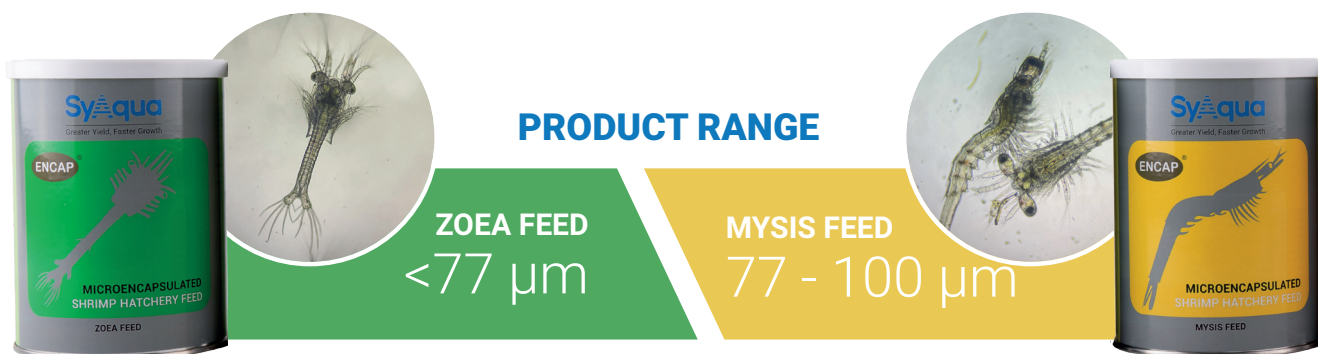
Higher nutrient availability for stronger larva.

FAST GROWTH

Targeted nutrition and precise size distribution that supports fast growth.

Microencapsulated
Shrimp Hatchery
Feed

Sustainable Shrimp Technologies
GENETICS • NUTRITION • HEALTH



INGREDIENTS

- Marine protein
- Plant protein
- Marine lipids
- Plant lipids
- Vitamins
- Minerals
- Carotenoids

NUTRITIONAL ASPECTS

Zoea Stage

Formulated to provide nutrition in an easily digestible form to support the rapidly developing Zoea stages.

Mysis Stage

Formulated for the developing digestive system and nutritional needs of Mysis stage shrimp.

STORAGE

- Store at room temperature..
- Once opened, store in the refrigerator and use within one month.

Shelf life : Minimum 24 months when stored properly.

PACKAGING

Encap is packed in 425grams cans (12 cans per carton).



NUTRITIONAL PROFILE

CRUDE PROTEIN
MIN 50%

CRUDE FAT
MIN 10%

CRUDE ASH
MAX 18%

CRUDE FIBRE
MAX 3%

MOISTURE
MAX 8%

HUFA
MIN 3%

RECOMMENDED FEEDING GUIDE

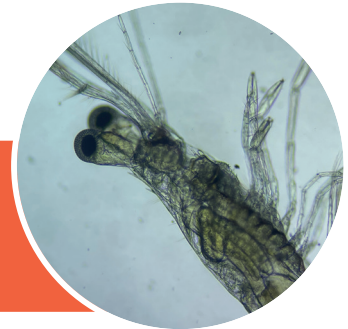
FEED	ENCAP ZOEAL				FEED	ENCAP MYSIS			
Stage	Z1	Z2	Z3	Z3/M	Stage	M1	M2	M3	M/PL
g/day	40	50	60	60	g/day	70	80	90	100

Encap should be fed in conjunction with good quality algae and Artemia. Feed Encap 4-6 times daily.



PRODUCT RANGE

EARLY POST - LARVA FEED (PL 1-5)
100 - 250 µm



INGREDIENTS

- Marine protein
- Plant protein
- Marine lipids
- Plant lipids
- Vitamins
- Minerals
- Carotenoids

NUTRITIONAL ASPECTS

Post-Larva Stage

The shrimp physiology undergoes rapid changes during the postlarva stages. ENCAP Post Larva Feed is designed to fulfil the changing nutritional demands of post larvae.

STORAGE

- Store at room temperature..
- Once opened, store in the refrigerator and use within one month.

Shelf life : Minimum 24 months when stored properly.

PACKAGING

Encap is packed in 425grams cans (12 cans per carton).



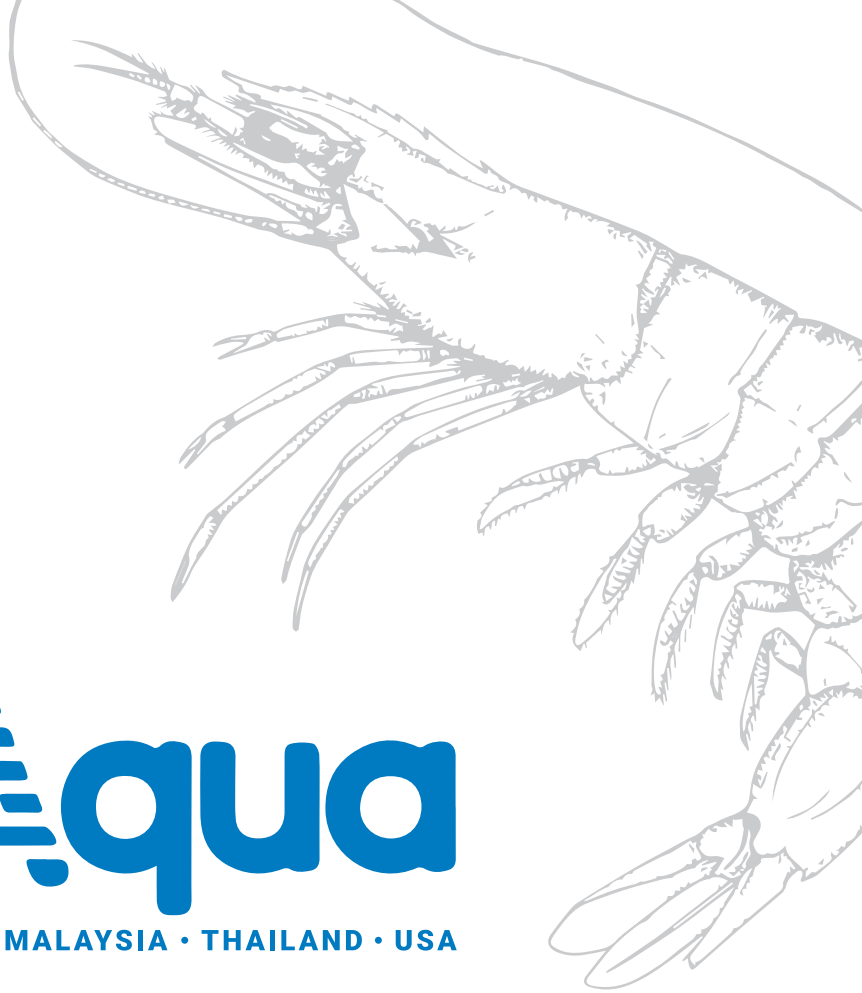
NUTRITIONAL PROFILE

CRUDE PROTEIN MIN 50%	CRUDE FAT MIN 10%
CRUDE ASH MAX 18%	CRUDE FIBRE MAX 3%
MOISTURE MAX 8%	HUFA MIN 3%

RECOMMENDED FEEDING GUIDE

FEED	ENCAP EPL				
Stage	PL1	PL2	PL3	PL4	PL5
g/day	100	120	130	140	140

Encap should be fed in conjunction with good quality algae and Artemia. Feed Encap 4-6 times daily.



Syaqua

INDIA • INDONESIA • MALAYSIA • THAILAND • USA

#bluebalanceassured

Sustainable Shrimp Technologies

GENETICS • NUTRITION • HEALTH

www.syaqua.com